

Valvole rotative LDT_ - Rotary valves LDT_

A passaggio verticale 1bar - Drop-thru 1bar

- Alta efficienza di riempimento
High filling efficiency
- Minime perdite di trafilamento
Minimum gas leakage
- Costruzione robusta
Heavy duty construction
- Cuscinetti esterni e tenute flussate
Outboard bearings and air purge type seals
- Versioni antideflagranti fino a 10 bar per polveri St2
Explosion proof versions up to 10 bar and St2 products.
- Versioni certificate ATEX 2014/34/EU
Versions in accordance with ATEX 2014/34/EU
- Disponibili versioni a smontaggio rapido
Fast opening versions available



Applicazione <i>Application</i>	Alimentatori di materiali in polvere in sistemi di trasporto pneumatico o scaricatori e dosatori sottosili e tramogge. Ampia gamma di versioni ed accessori disponibili.	<i>Volumetric feeders for powders in pneumatic conveying systems or discharger and metering valves below silos and hoppers. Large range of versions and options available.</i>
Dimensioni <i>Size</i>	6, 8, 10, 12, 14, 16, 20 da 4 a 144 Litri/giro	6, 8, 10, 12, 14, 16, 20 4 to 144 Litres/rev.
Pressione <i>Pressure range</i>	Fino a 1bar di pressione differenziale	<i>Up to 1bar differential pressure</i>
Temperatura <i>Temperature</i>	Fino a 40°C (Versioni standard) Versioni per alte temperature fino a 350°C	<i>Up to 40°C (Standard versions) High temperature versions up to 350°C</i>
Materiali di costruzione <i>Construction materials</i>	<ul style="list-style-type: none"> ▪ Corpo e coperchi Fusione di ghisa ▪ Rotore Acciaio al carbonio, acciaio inossidabile ▪ Estremità delle pale Acciaio antiusura, acciaio inossidabile ▪ Trattamenti superficiali interni Nichelatura chimica, cromatura dura, carburo di tungsteno, teflonatura 	<ul style="list-style-type: none"> ▪ <i>Body and end covers</i> <i>Cast iron</i> ▪ <i>Rotor</i> <i>Carbon steel, stainless steel</i> ▪ <i>Replaceable blade tips</i> <i>Hardened steel, stainless steel</i> ▪ <i>Internal surface treatments</i> <i>Nickel-plating, hard chrome-plating, tungsten carbide, teflon</i>

Valvole rotative LDT_ - Rotary valves LDT_

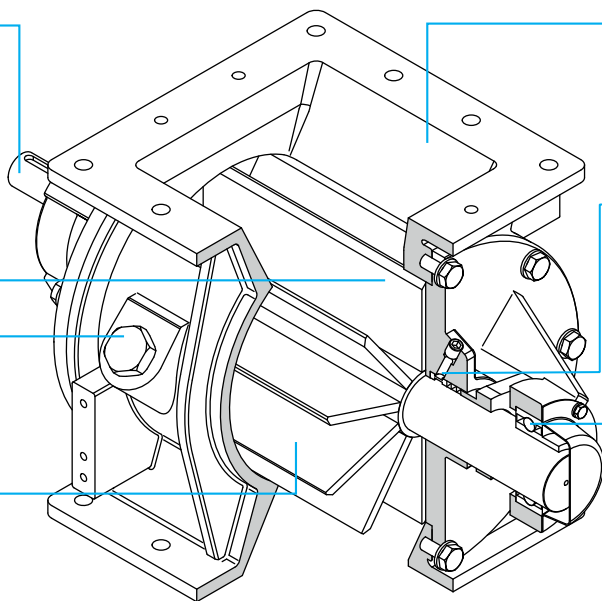
Caratteristiche - Design features

Trasmissione diretta o a catena
Direct drive or chain drive

Basse perdite di trafilamento e alta efficienza di riempimento grazie ai minimi giochi interni
Minimal gas leakage loss and greater filling efficiency due to tight internal clearances

Ampi fori di sfiato integrati (Opzionale)
Body vent openings integrated into housing (Optional)

Rotori aperti con 10 pale
10 vanes Open end rotor



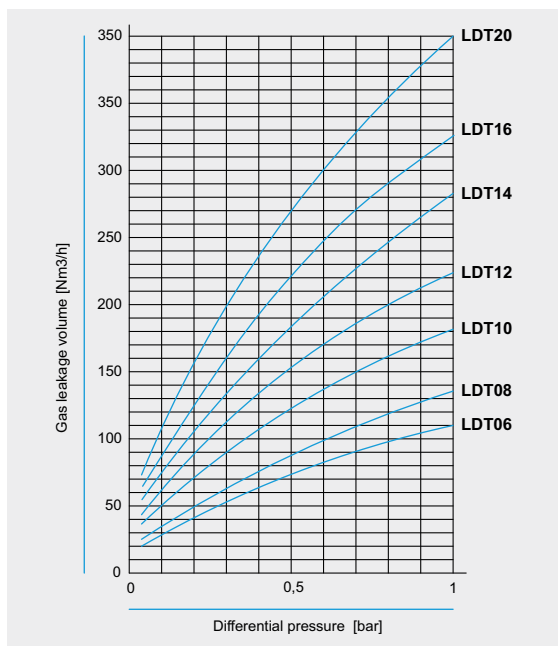
Robusto corpo in fusione con entrata ed uscita quadrate di grandi dimensioni
Rugged cast body with large square inlet and outlet

Tenuta flussata (Versione standard)
Air purge type seal (Standard version)
Ampia gamma di tenute disponibili a richiesta
Large range of shaft sealing are available on request

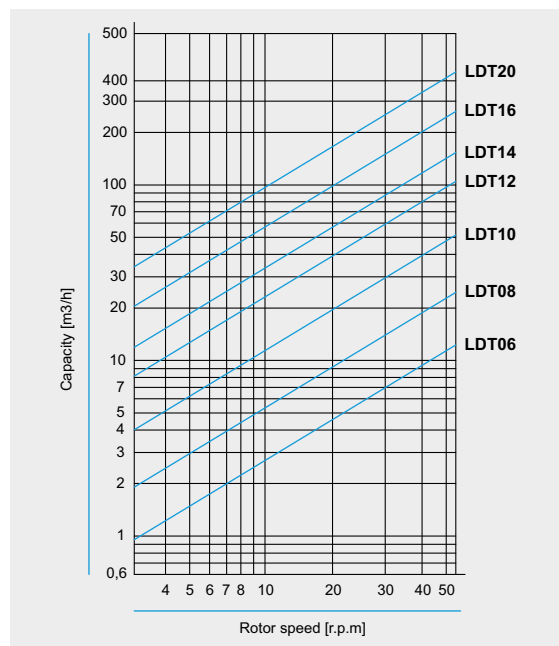
Cuscinetti montati esternamente, separati dal prodotto tramite lo spazio esterno tra tenuta e cuscinetto
Outboard mounted ball bearings, separated from product by outlet space between shaft seal and bearing

Dati tecnici - Technical data

Diagrammi *Diagrams*



■ **Diagramma delle perdite di trafilamento**
(Valvole nuove con giochi standard, senza prodotto)
Gas leakage diagram
(New valves with standard clearances, without product)



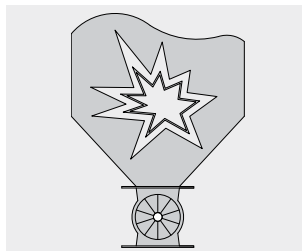
■ **Diagramma delle portate (Riempimento al 100%)**
Capacity diagram (Filling efficiency 100%)

Versioni - Versions

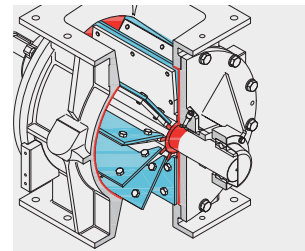
Versioni
Versions



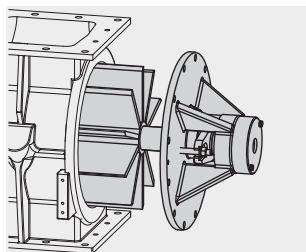
- **Versioni ATEX 2014/34/EU**
Gruppo II, Zona 1/21, Cat.2GD
Gruppo II, Zona 0/20, Cat.1GD
- **Versions ATEX 2014/34/EU**
Group II, Zone 1/21, Cat.2GD
Group II, Zone 0/20, Cat.1GD



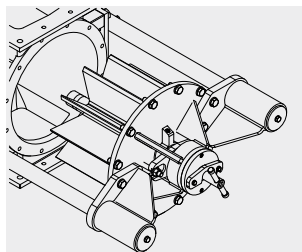
- **Versioni certificate EN15089**
“Sistemi di isolamento dell’esplosione”, per polveri St1 e St2 e resistenti a sovrappressioni fino a 10bar
- **Versions conforming to EN15089**
“Explosion isolation system”, for dusts St1 and St2 and pressure shock resistant up to 10bar



- **Versioni antiusura,**
differenti soluzioni e materiali con più livelli di protezione
- **Wear resistance versions,**
various designs and materials with different wear protection levels



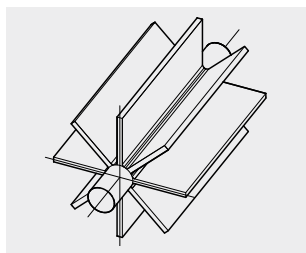
- **Versioni a smontaggio rapido**
Fast opening versions



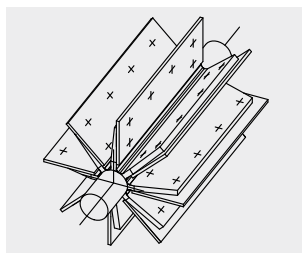
- **Versioni a smontaggio rapido con guide di estrazione**
Fast opening versions with supporting bars

Rotori - Rotors

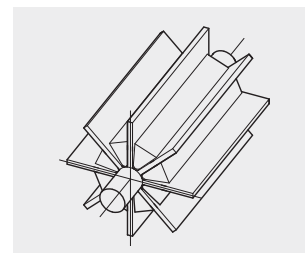
Rotori
Rotors



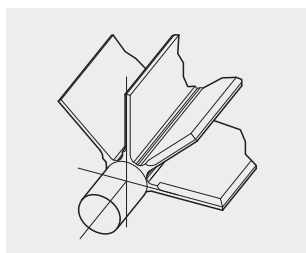
- **Rotore A**
Rotore aperto
Rotor A
Open end rotor



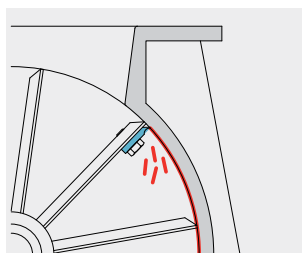
- **Rotore C**
Rotore aperto con pale sostituibili
Rotor C
Open end rotor with replaceable blades



- **Rotori parzialmente riempiti**
Partially filled rotors



- **Rotori con pale smussate**
Rotors with beveled edge blades

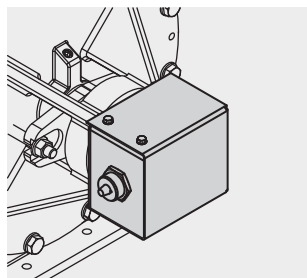


- **Rotori con raschiatori**
Scraper blades rotors

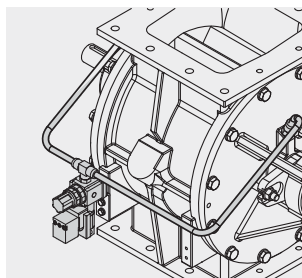
Valvole rotative LDT_ - Rotary valves LDT_

Accessori - Accessories

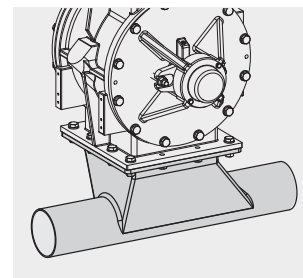
Accessori Accessories



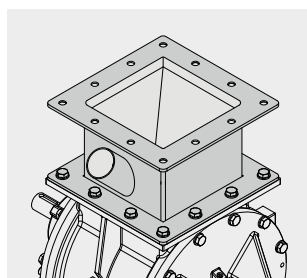
■ Controllo di rotazione
Motion indicator



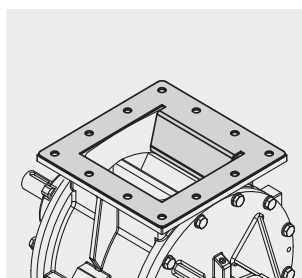
■ Sistema di flussaggio delle tenute
Shaft seals air purge system



■ Iniettore per trasporti pneumatici
Pneumatic conveying manifold



■ Sistema di sfiato AVS
Air vent system AVS



■ Entrata a deflettore
Inlet material deflector

Designazione del tipo - Type designation

Esempio Example

LDT S C 08 A - GF - NN

Tipo valvola
Valve type

Smontaggio rapido
Fast opening

Trasmissione
Drive

Dimensione
Size

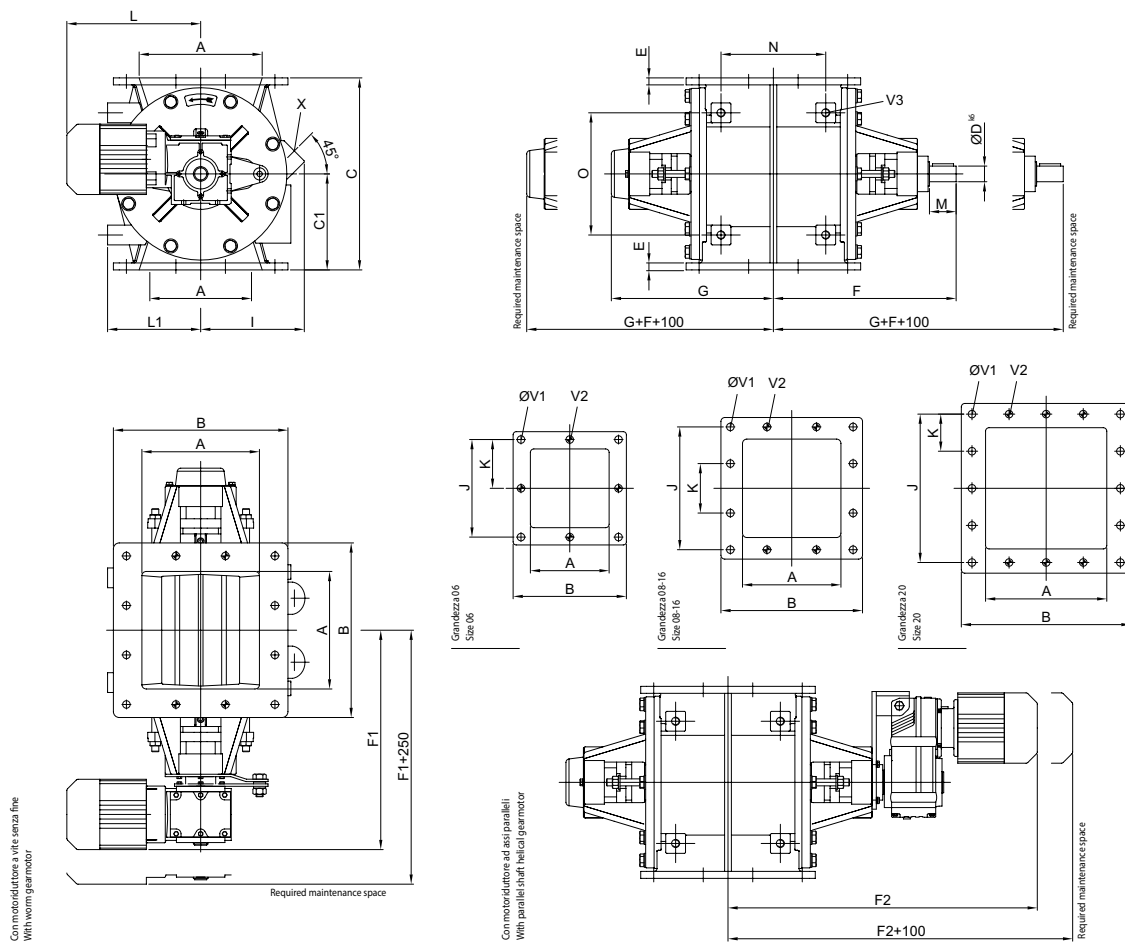
Tipo rotore
Rotor type

Motoriduttore
Gearmotor

Materiali di costruzione
Construction materials

Valvole rotative LD_{TM} - Rotary valves LD_{TM}

Dimensioni - Dimensions



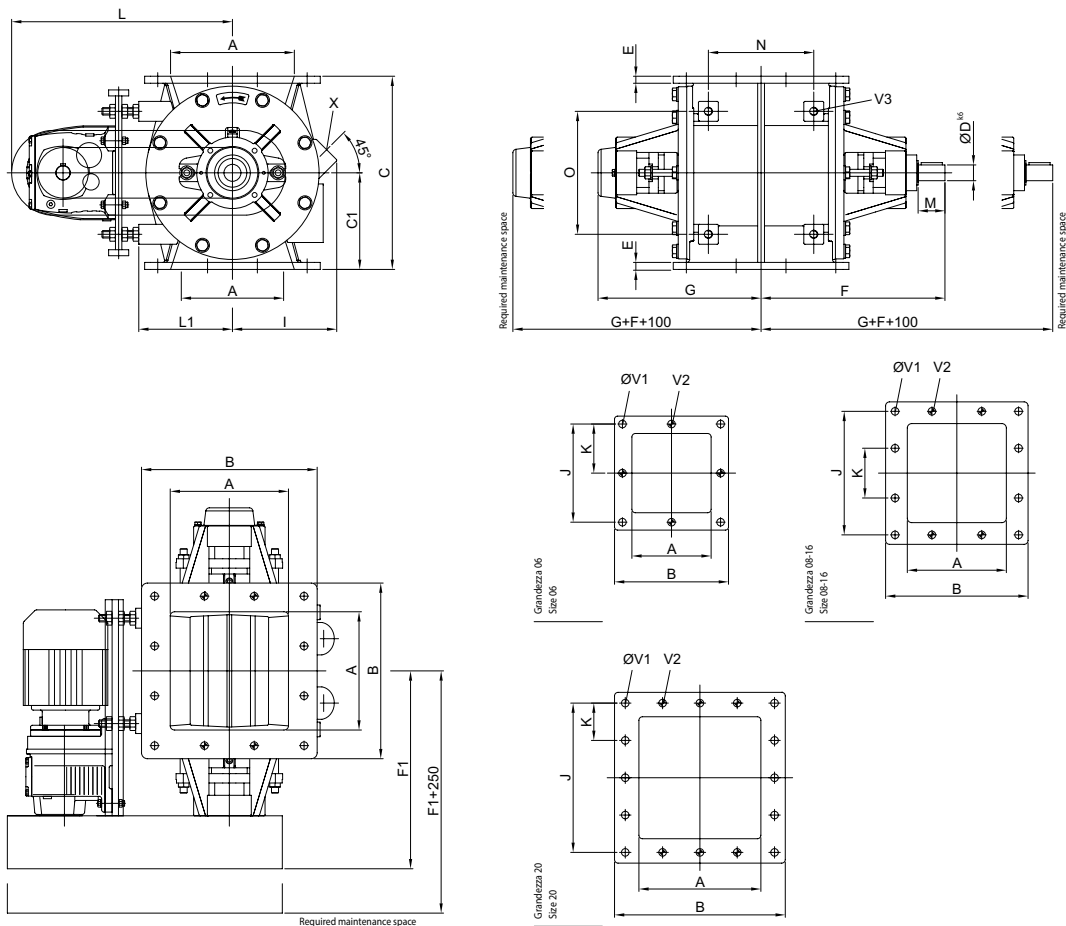
	Ltr/rev Ltr/giro	A	B	C	C1	Ø D ^{k6}	E	F	F1 ²⁾	F2 ²⁾	G	I
LD_{TM}06	4	150	260	260	130	25	12	310	390	540	255	135
LD_{TM}08	7,5	200	290	330	165	30	12	333	440	605	280	170
LD_{TM}10	17	250	350	400	200	35	16	370	—	660	305	212
LD_{TM}12	33	300	430	490	245	35	16	400	—	730	335	264
LD_{TM}14	52	350	480	560	280	40	20	441	—	785	375	290
LD_{TM}16	85	400	530	645	322,5	40	20	480	—	855	415	332
LD_{TM}20	144	500	650	740	370	50	20	633	—	970	475	382

	L ²⁾	L1	M	N	O	J	K	Ø V1	V2	V3	X	kg ¹⁾
LD_{TM}06	315	124	60	172	162	210	105	14	M12	M12	2 x G¾"	95
LD_{TM}08	323	160	60	180	210	255	85	14	M12	M16	2 x G1"	130
LD_{TM}10	—	194	70	261	280	306	102	14	M12	M16	2 x G1"	180
LD_{TM}12	—	236	70	304	320	390	130	14	M12	M16	2 x G1½"	275
LD_{TM}14	—	267	70	360	340	432	144	14	M12	M20	2 x G1½"	365
LD_{TM}16	—	310	70	362	340	480	160	18	M16	M20	2 x G1½"	445
LD_{TM}20	—	356	165	403	400	600	150	18	M16	M20	2 x G2"	690

1) Peso approssimativo / Weight approx.
2) Misure approssimative / Measurements approx.

Valvole rotative LDTC_ - Rotary valves LDTC_

Dimensioni - Dimensions



	Ltr/rev Ltr/giro	A	B	C	C1	Ø D ^{k6}	E	F	F1	G	I
LDTC06	4	150	260	260	130	25	12	310	326	255	135
LDTC08	7,5	200	290	330	165	30	12	333	348	280	170
LDTC10	17	250	350	400	200	35	16	370	374	305	212
LDTC12	33	300	430	490	245	35	16	400	404	335	264
LDTC14	52	350	480	560	280	40	20	441	438	375	290
LDTC16	85	400	530	645	322,5	40	20	480	478	415	332
LDTC20	144	500	650	740	370	50	20	540	536	475	382

	L ²⁾	L1	M	N	O	J	K	Ø V1	V2	V3	X	kg ¹⁾
LDTC06	375	124	60	172	162	210	105	14	M12	M12	2 x G¾"	95
LDTC08	445	160	60	180	210	255	85	14	M12	M16	2 x G1"	135
LDTC10	445	194	70	261	280	306	102	14	M12	M16	2 x G1"	190
LDTC12	522	236	70	304	320	390	130	14	M12	M16	2 x G1½"	295
LDTC14	590	267	70	360	340	432	144	14	M12	M20	2 x G1½"	375
LDTC16	668	310	70	362	340	480	160	18	M16	M20	2 x G1½"	470
LDTC20	742	356	70	403	400	600	150	18	M16	M20	2 x G2"	680

1) Peso approssimativo / Weight approx.
2) Misure approssimative / Measurements approx.



Altri prodotti YOUNG-MASSA - Other YOUNG-MASSA products



LDC_
Valvole rotative – 0,1 bar
Rotary valves – 0,1 bar



DC_
Valvole rotative – 0,1 bar
Rotary valves – 0,1 bar



LDR_
Valvole rotative – 1 bar
Rotary valves – 1 bar



LBT_
Valvole rotative a flusso attraversato – 1 bar
Blow-thru Rotary valves – 1 bar



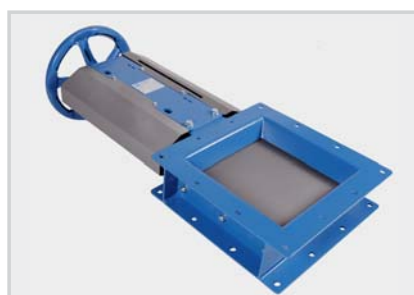
LSE_
Valvole rotative per granuli – 1 bar
Rotary valves for pellets – 1 bar



Versioni a smontaggio rapido
Fast opening versions



Versioni con guide di estrazione
Versions with supporting bars



VP_, VPH_
Valvole a ghigliottina
Slides Valves



SA_
Valvole a doppio clapet
Double flap gate valves

OVER
40
Years of service



2014/34/EU

YM
YOUNG-MASSA

YOUNG-MASSA Srl

Via S. Maria, 5
20873 Cavenago Brianza (MB) - Italia

Tel: +39 0295019613

Fax: +39 0295019413

info@youngmassa.it

www.youngmassa.it